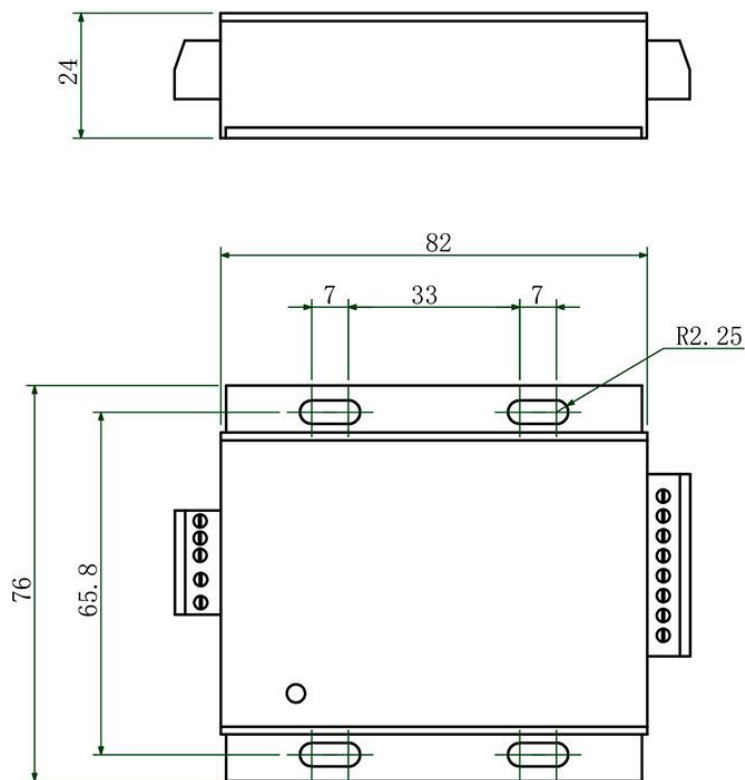
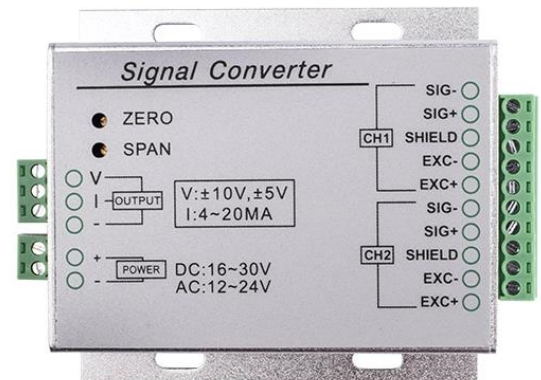


## Mounting Dimension



Model: MA200



## Features &amp; Applications

- ▶ Wide input range, 0.4~6mV/V, can be connected with most of the strain bridge transducers
- ▶ Strong load capacity can be connected with 4pcs 350Ω sensors
- ▶ Adopting original imported electronic components, high response frequency, good long-term stability
- ▶ Input power reverse connection protection and output short circuit protection
- ▶ Power supply 16~30VDC (24VDC recommended) 12~24VDC
- ▶ Suitable for pressure, tension, torque, tension and other strain bridge sensors.

Specifications	Technique
Output specification	0.4~6mV/V
Comprehensive accuracy	±0.05%FS
Input load	4 pcs 350Ω Load Cell
Power supply	16~30VDC or 12-24VAC
Acquisition frequency	≥100-5000HZ
Operation temp range	-30~60°C
Material	Aluminum ally
IP Class	IP64