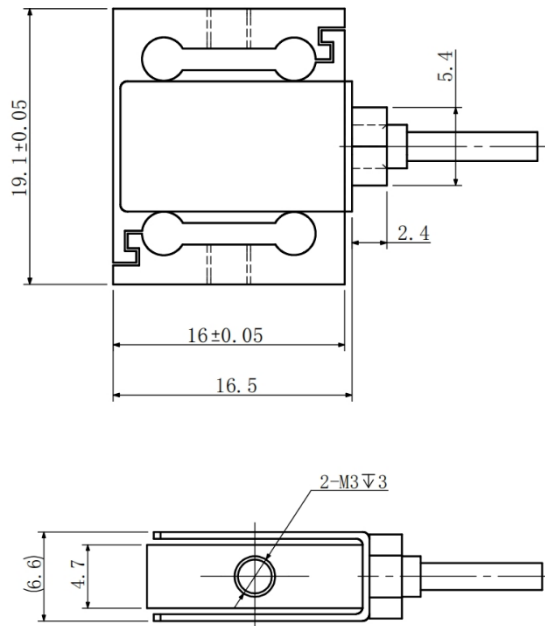


Mounting Dimension (Unit: mm)



Model: MSM-L



Features & Applications

Micro sensor, high precision, anti-overload

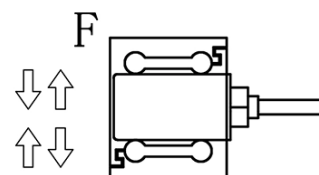
Aluminum alloy material

Bidirectional tension and compression

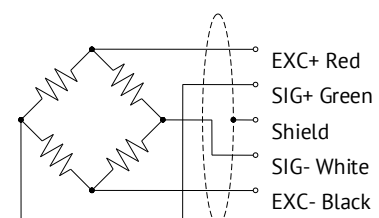
Mainly used in various 3C product key force tests such as computers, various switch key tests, various plug-in force tests, medical testing, and other industrial testing, measurement and control systems

High dynamic response frequency

Load Direction



Wiring Code



Specifications	Technique
Capacity	100,200,500,1000g
Rated output	2.0±20% mV/V
Zero balance	±0.02 mV/V
Creep	0.05%F.S.
Non-linearity	0.1%F.S.
Hysteresis	0.05%F.S.
Repeatability	0.05%F.S.
Temp.effect on output	0.05%F.S./10°C
Temp.effect on zero	0.05%F.S./10°C
Input impedance	350±30 Ω
Output impedance	350±5 Ω
Insulation	≥5000M Ω /100VDC
Recommended excitation	5V
Maximum excitation	15V
Compensated temp range	-10~60°C
Operation temp range	-20~80°C
Safe overload	150%F.S.
Ultimate overload	200%F.S.
Cable size	ϕ 2×3000mm
Material	Aluminium alloy/Stainless Steel
TDES Option	