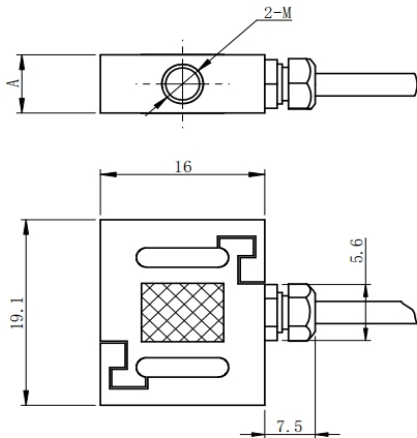
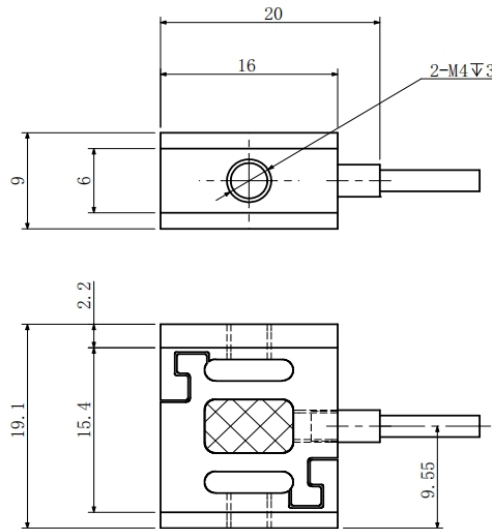


Mounting Dimension (Unit: mm)

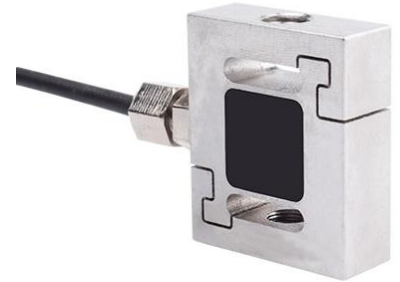


Capacity (N)	A	M
10, 20	5	M3
50, 100, 200, 300, 500	6	M4



1000N

Model: MSM



Specifications	Technique
Capacity	10,20,50,100,200,500,1000 N
Rated output	2.0±20% mV/V
Zero balance	±0.02 mV/V
Creep	0.1%F.S.
Non-linearity	0.1%F.S.
Hysteresis	0.1%F.S.
Repeatability	0.1%F.S.
Temp.effect on output	0.05%F.S./10°C
Temp.effect on zero	0.05%F.S./10°C
Input impedance	350±30Ω
Output impedance	350±5Ω
Insulation	≥5000MΩ/100VDC
Recommended excitation	5V
Maximum excitation	15V
Compensated temp range	-10~60°C
Operation temp range	-20~80°C
Safe overload	150%F.S.
Ultimate overload	300%F.S.
Cable size	φ2×3000mm
Material	Stainless Steel
TDES Option	

Features & Applications

Micro sensor, high precision, anti-overload

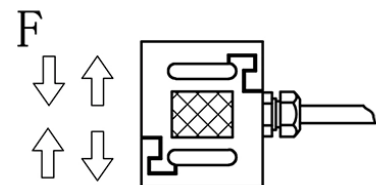
Stainless steel or aluminum alloy material

Bidirectional tension and compression

Mainly used in various 3C product key force tests such as computers, various switch key tests, various plug-in force tests, medical testing, and other industrial testing, measurement and control systems

High dynamic response frequency

Load Direction



Wiring Code

